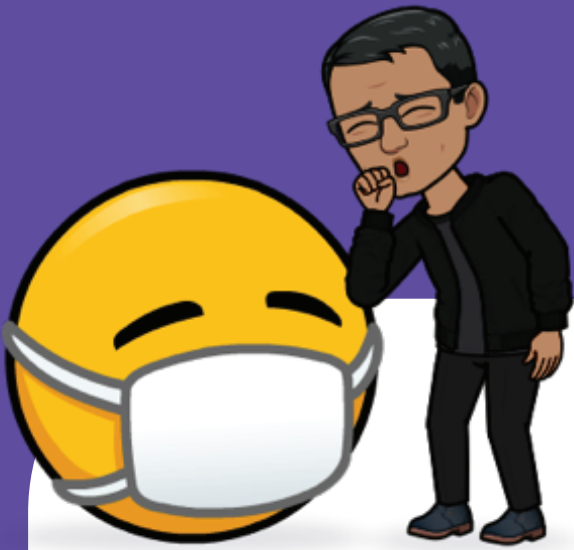


FAQ's for Face Covering Violations



- **Is a face covering required?**

Yes. Policy 2170-E: Face Coverings requires that a facial covering/mask must be worn while on school campus, at a school-sponsored event, and while on school transportation.

- **Can a student be issued a disciplinary violation from the Code of Student Conduct for not wearing a face covering?**

Students may be issued disciplinary consequences for actions determined to be intentional, insubordinate, defiant and not accidental or incidental, or when redirection and interventions have been disregarded.

- **What should I do if a student refuses to wear or keep on his/her face covering?**

Provide reminders and redirection in alignment to the school and/or classroom behavior plan. If the student does not comply with the redirection from staff and the action is deemed to be a repeated disregard to the redirection, a disciplinary referral may be written.

- **What happens if the student refuses to wear or keep on the face covering while on school transportation?**

Bus drivers may submit a disciplinary referral to the school administrator for a Level Two violation if a student does not comply with the reminder and/or redirection.

Note:

- Factors such as age, grade level, social-emotional, developmental and intellectual levels, ability and/or disability, and overall student rights and responsibilities will be considered.
- Students with disabilities who are eligible under the Individuals with Disabilities Education Act (IDEA) or Section 504 of the Rehabilitation Act of 1973 (Section 504), have additional rights under IDEA or Section 504 and State Board Rule.

